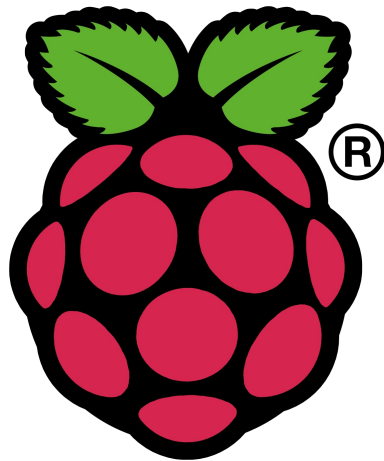


Raspberry Pi Thin Client Project



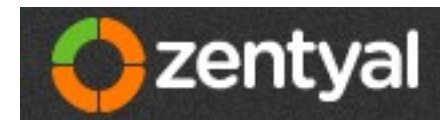
Fallstudie
- weiterführend zum SFD 2013

Terminologie



Thin Client

Terminal Server



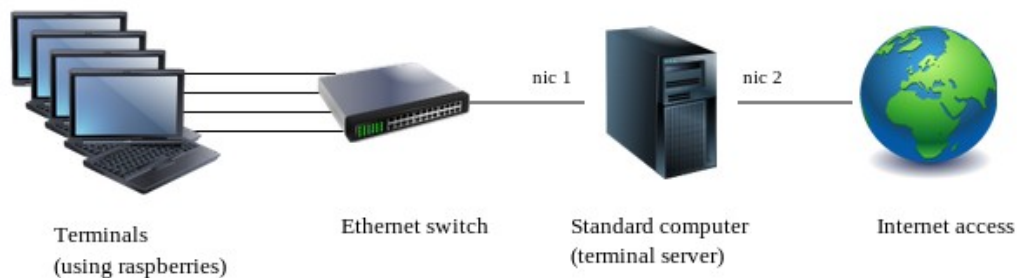
Hardware



- 2 Server
- 1 QNap NAS
- 1 APC USV

- 16 RPi – Thin Clients

– <http://www.berryterminal.com/>



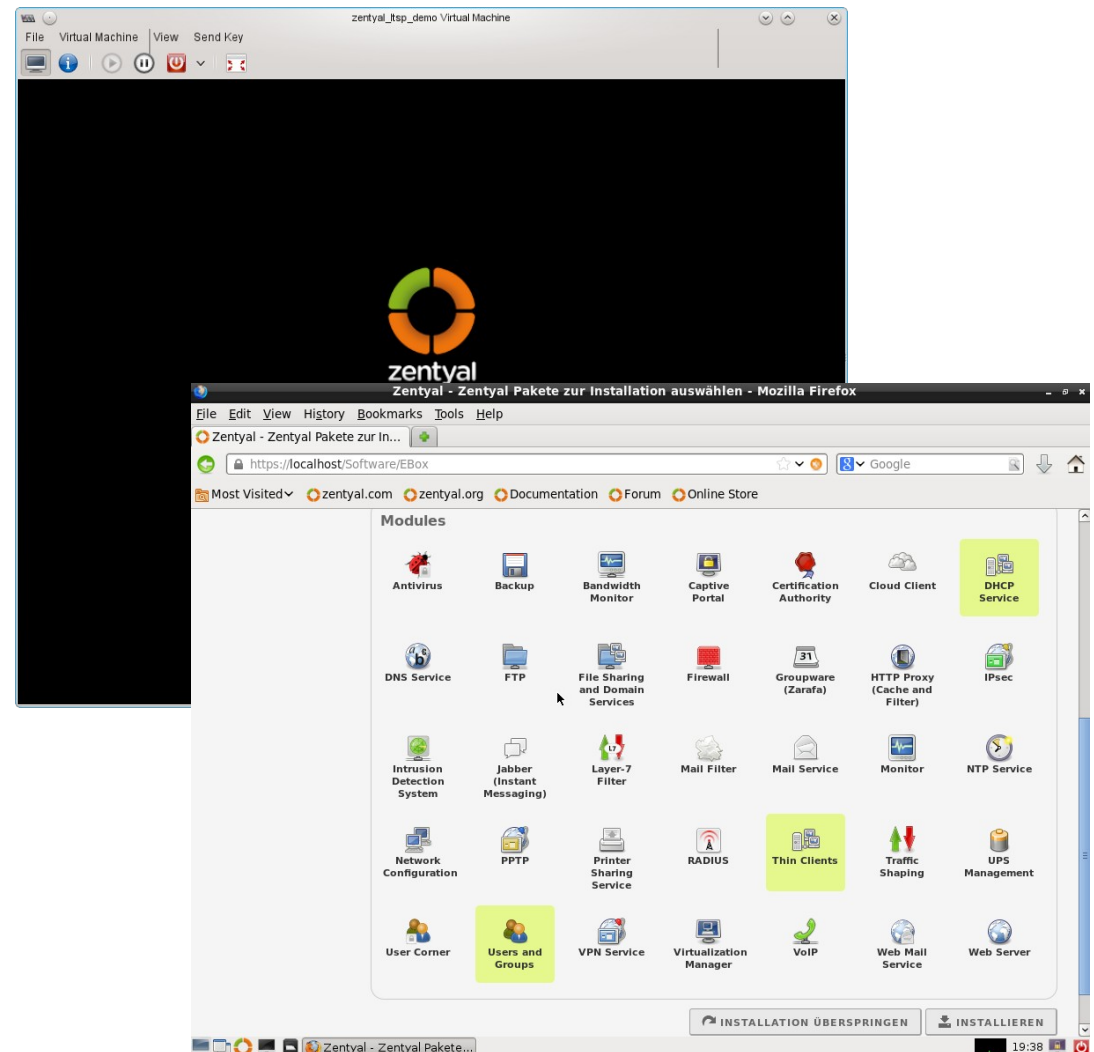
- DC (Zentyal)
 - Xeon Dual-Core 3 GHz
 - 8 GB RAM
- VServ : KVM (Ubuntu 12.04.3 LTS)
 - Xeon 8-Core 2.27 Ghz
 - 64 GB RAM
 - Raid 6 500GB HDDs

```
serv@pts-srv02:~$ virsh list
 Id Name                State
-----
 1 debian-v01           running
 2 ptsv02-zentyal       running
 3 edubuntu_server      running
```

Software / Server



- Zentyal
- Ubuntu Server
 - KVM Hypervisor
 - Edubuntu Server



Software / Raspberry



- Berryterminal (LTSP)

- Firefox



- *Flash*



- LibreOffice



- Gimp & Inkscape



- Tipp10



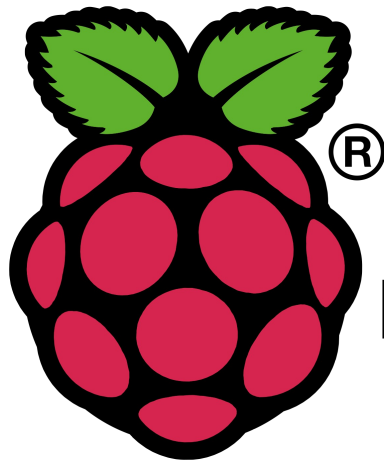
- Xfce (Thunar)



PTS Wildon



Danke!



Fragen? / Diskussion?

Herzlichen Dank!



Quellen / Grafiken:

- <http://www.raspberrypi.org/>
- <http://www.ltsp.org/>
- <http://www.zentyal.com/>
- <http://www.berryterminal.com/>

Kontakt:

@susothatsucks
raspberry@mwallner.net